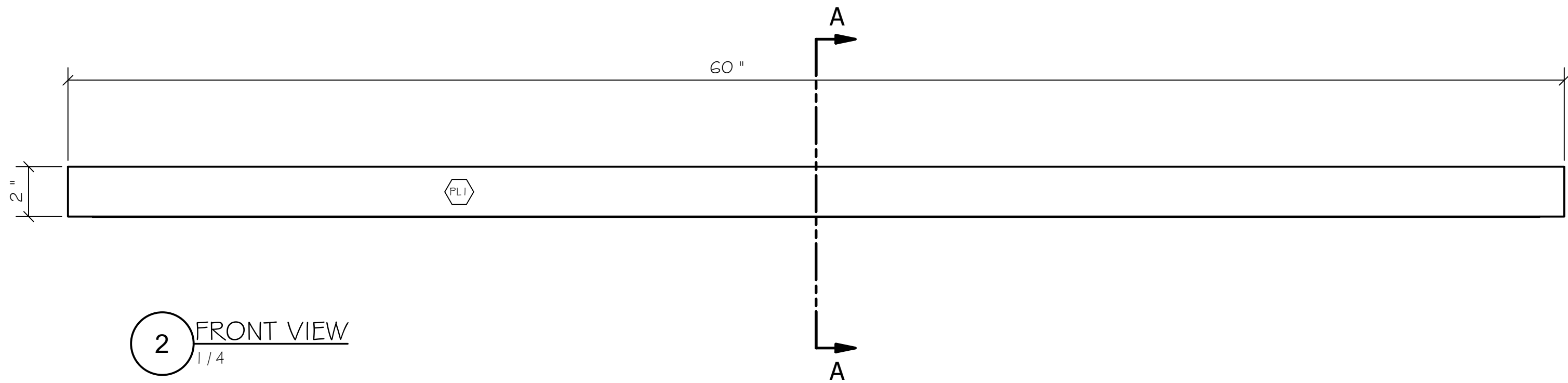
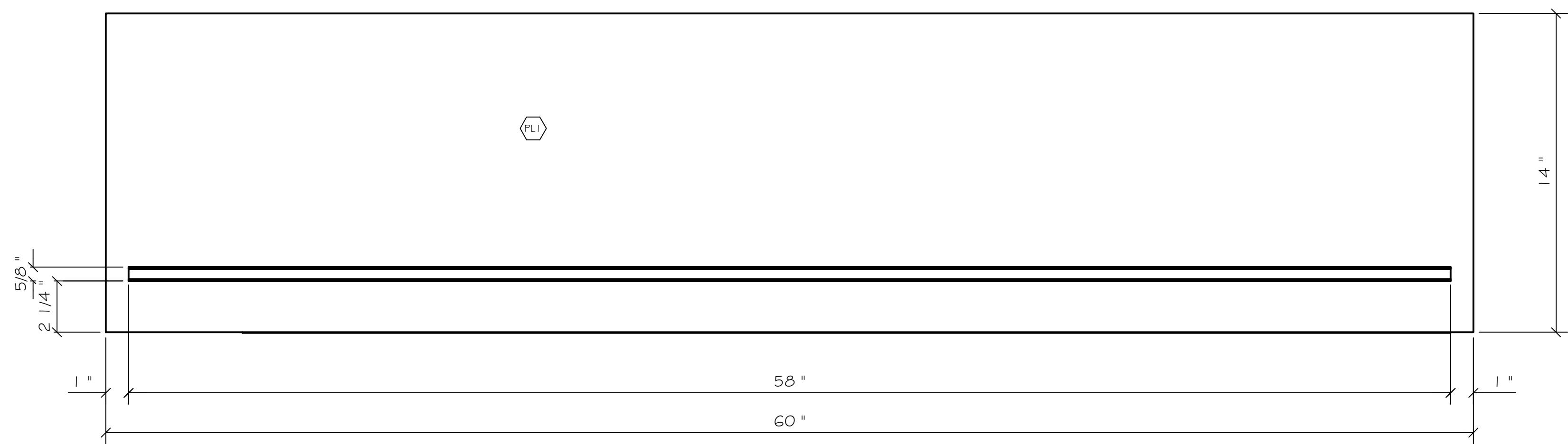


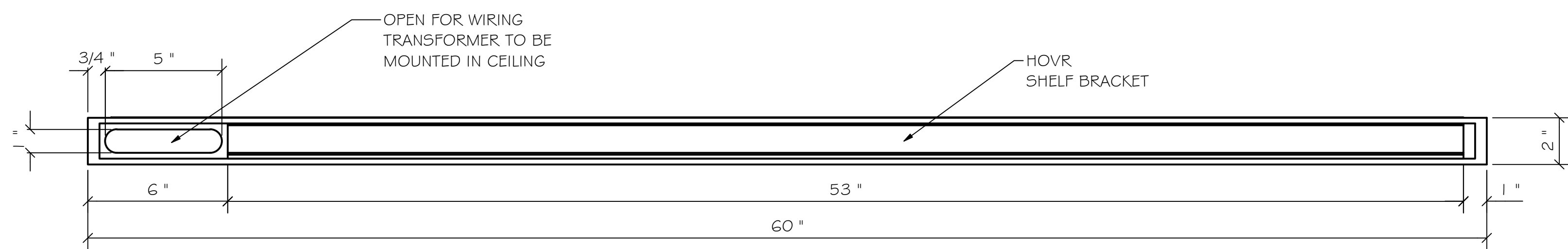
1 PLAN VIEW
1/4



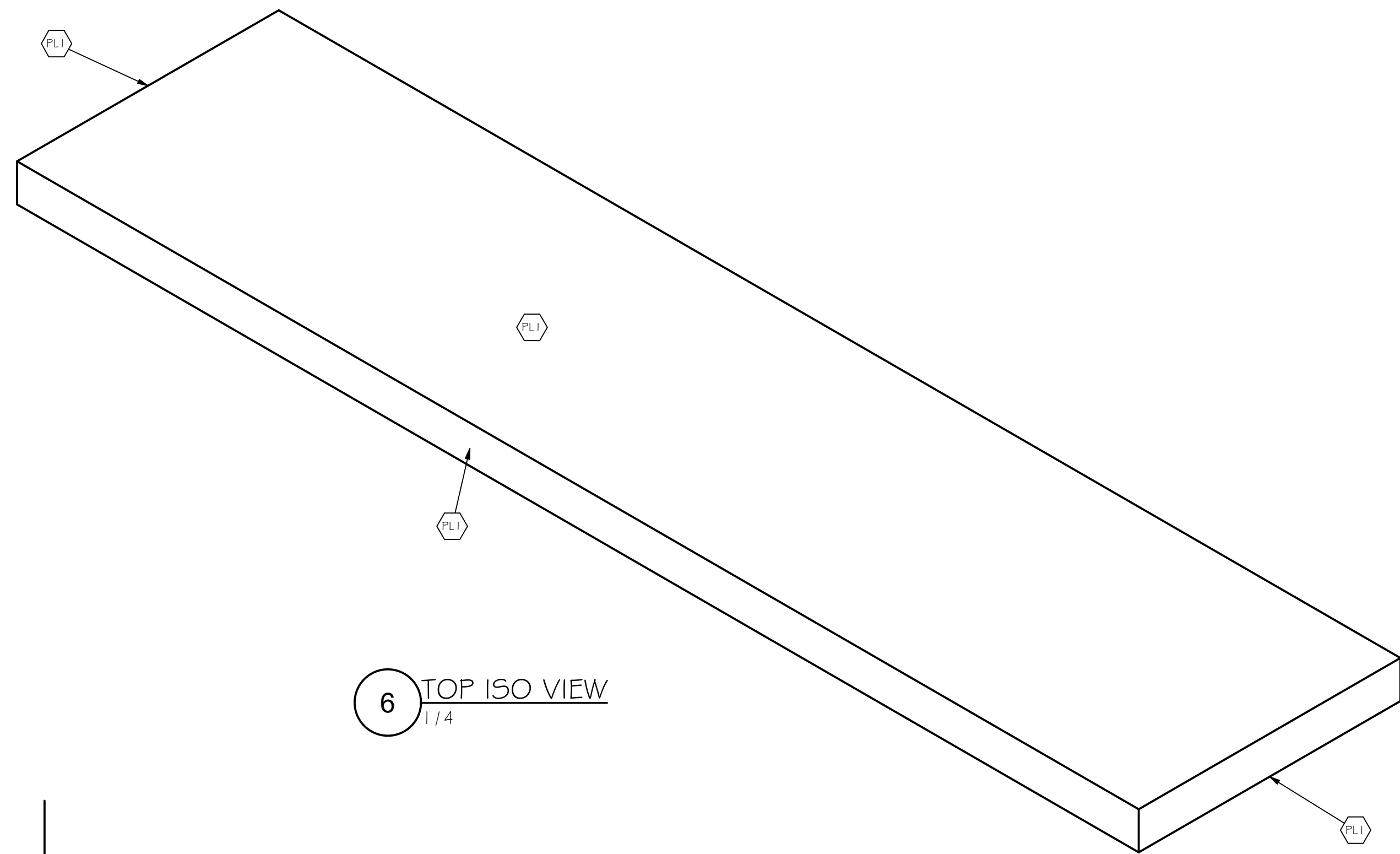
2 FRONT VIEW
1/4



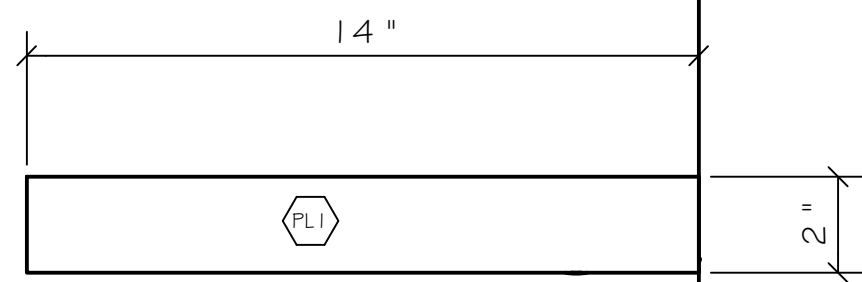
4 BOTTOM VIEW
1/4



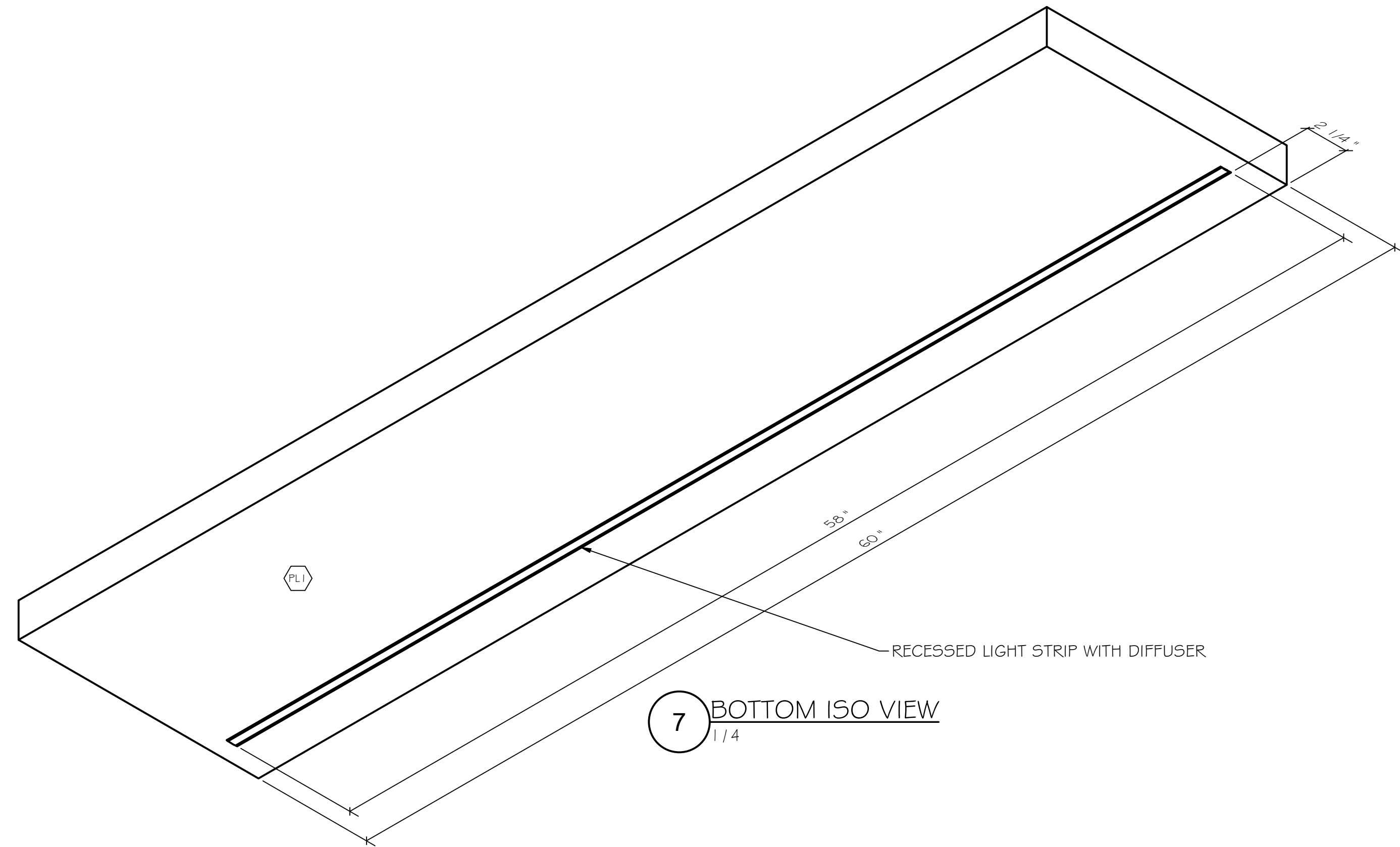
5 BACK VIEW
1/4



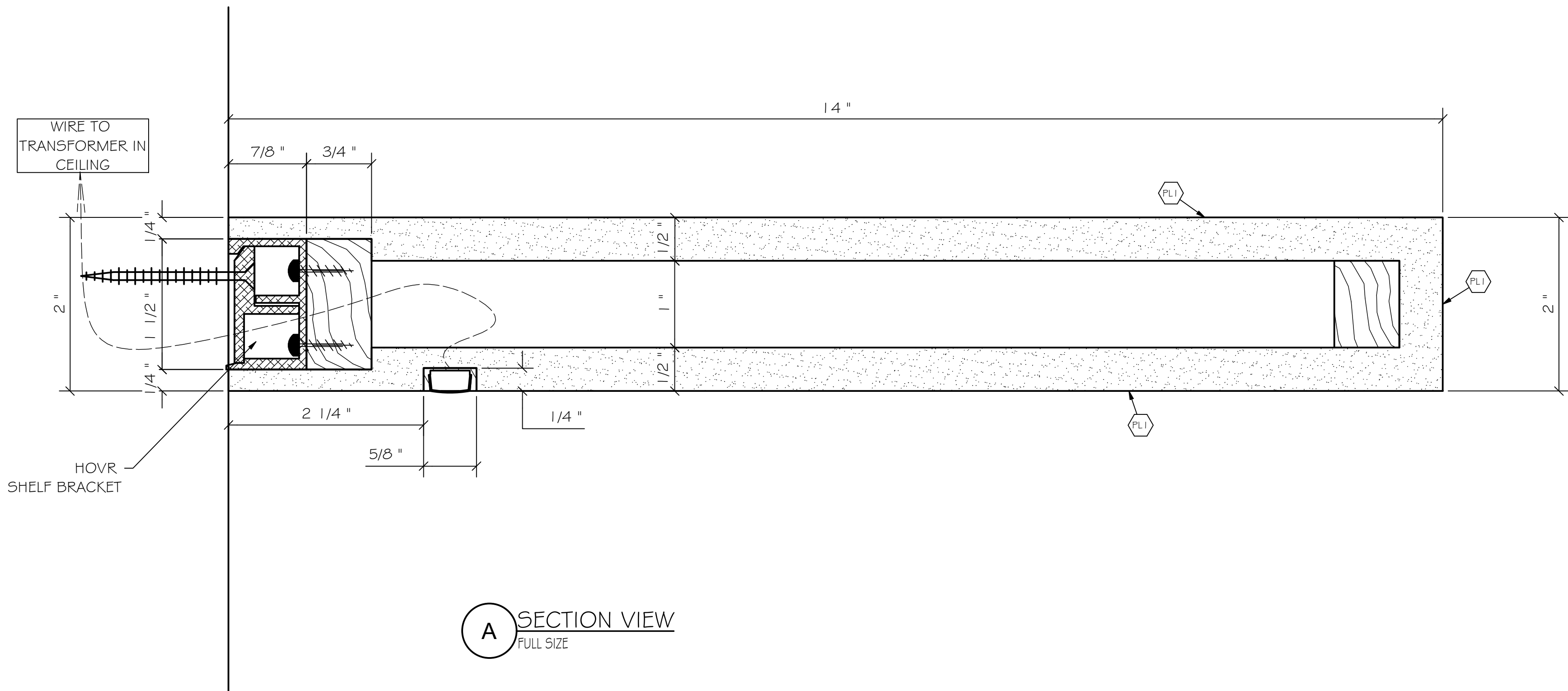
6 TOP ISO VIEW
1/4



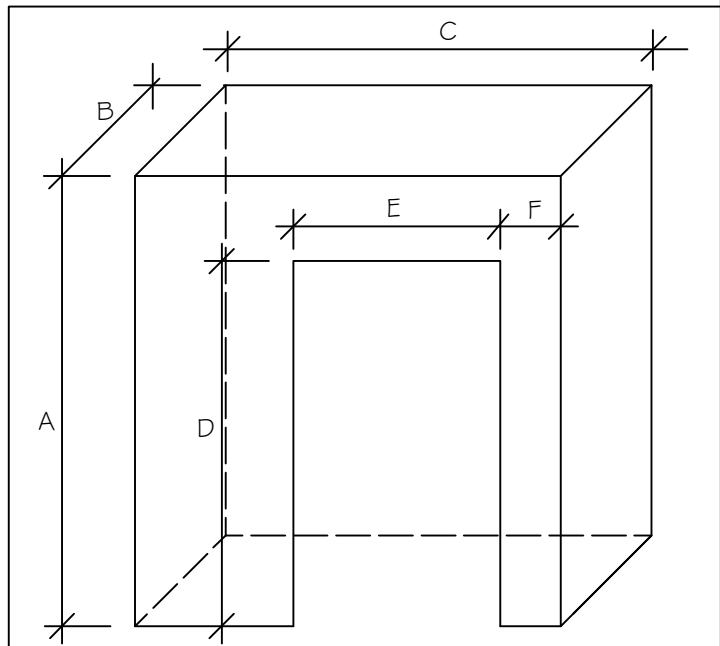
3 SIDE VIEW
1/4



7 BOTTOM ISO VIEW
1/4



A SECTION VIEW
FULL SIZE



ELEVATOR INTERIOR SIZE	
A	HEIGHT
B	DEPTH
C	WIDTH
D	DOOR HEIGHT
E	DOOR WIDTH
F	DOOR OFFSET

SPECIAL SHIPPING INSTRUCTIONS: y/n

BUILDING ACCESS:
MAX. TRUCK SIZE -length- ft Height -' -
STREET LEVEL(TAILGATE LIFT) (y/n)
LOADING DOCK (y/n) Height -' -
-TIME RESTRICTIONS (y/n) before (AM/PM) after (AM/PM)

PATHWAY RESTRICTIONS
FROM -OFFLOAD LOCATION TO FREIGHT ELEVATOR
-NARROW DOORWAYS (y/n) size -
-NARROW CORRIDORS (y/n) size -
-TIGHT BENDS (y/n) size -
-AUXILIARY ELEVATOR (y/n) size(width) -
(Sketch in space below)

FROM -FREIGHT ELEVATOR TO FINAL LOCATION
-NARROW DOORWAYS (y/n) size -
-NARROW CORRIDORS (y/n) size -
-TIGHT BENDS (y/n) size -

SKETCH OR NOTE ISSUE(S):

FINISHES

DESCRIPTION

PLASTIC LAMINATE
FORMICA #6698-58
FALOMA POLAR

NOTES:

- SHELF LIGHT
- RECESSED TRACK 3M-PLU2748 WITH DIFFUSER
- 5000K LIGHT TEMPERATURE
- HYLED 9.5 AMP TRANSFORMER (TO BE MOUNTED IN CEILING. PROVIDE MAX. LENGTH FEED WIRE TO SHELF)
- SWITCH B/O

Issued	Date

O2 ISSUED FOR CONSTRUCTION 3/7/2025
O1 FOR APPROVAL 12/10/2024

SVEND NIELSEN
15 RENO DRIVE
TORONTO, ONTARIO
CANADA, M8L 2A8
ph: 416 748-0131, fx: 416 748-0414

Project: READY SET RENO

Designer:

Drawing: FLOATING SHELF

Drawn By: PSE Project No.: 24-079

Scale: 1/4 Drawing No.: D2.1

Date: 2024-12-10